

Bennett's Artifact Auctions Presents

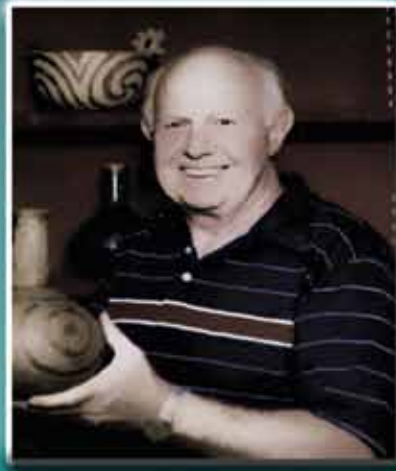
The Fred Eiserman Collection Part 1

Sunday, August 21st.

Preview:
8-10am

Start Time:
10am

Quality Inn - Rt. 97 @ I-71
1000 Comfort Plaza Dr
Bellville, OH 44813
Hotel Phone:
(419) 866-7000



Includes many
fine relics pictured
in Who's Who #10
as well as some rare
artifacts from
Spiro Mound!

Questions & Absentee Bids:
(419) 945-2893



www.oldrelics.com

Prehistoric Indian Artifact Auction

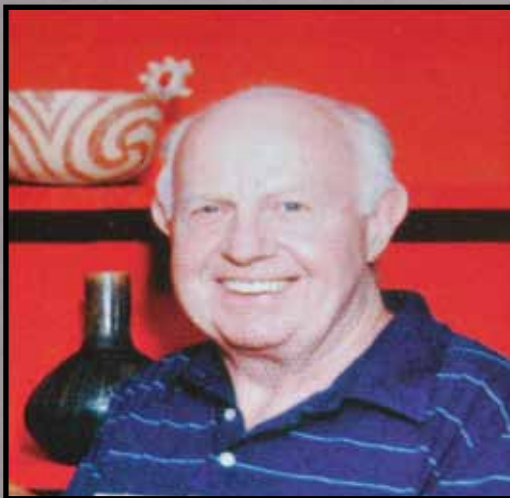
August 21st., 2011

Auctioneers:
Paul Emerson &
Nick DeFelice

Auction Start Time: 10:00 AM
Preview 8 -10 AM

Featuring the Collection of Fred Eiserman - Part 1

Featuring RARE artifacts from the Spiro Mound!



Please Note: 10% Buyers Premium Applies to All Items!

(Absentee bids, phones bids & internet bids are available if you cannot attend)

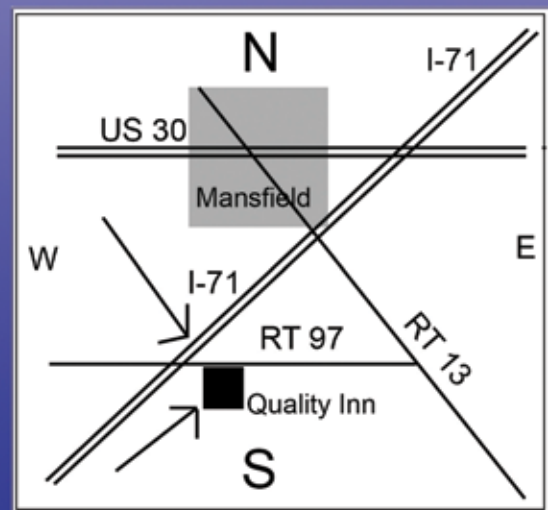
Quality Inn - Rt. 97 @ I-71

1000 Comfort Plaza Drive Bellville, OH 44813
Hotel Phone - (419) 886-7000

Questions & Absentee Bids call:
419-945-2893

Free Pizza will be served for lunch!

See Over 2,000 Photos of the
Lots in This Sale at:
www.OldRelics.com



10% Buyers Premium - Internet bids accepted - 13% buyers premium for online bidding

Description of Sale:

Bennett's is excited to announce the sale of the famous Fred Eiserman Artifact Collection!

Thousands of artifacts from this great collection will be sold at auction in a series of sales beginning with this Aug. 21st. date.

Many wonderful artifacts from all over the U.S. will be brought to sale with highlighted items from the Spiro Mound, a great selection of truly incredible South Western Birdpoints and many beautiful items from Illinois, Missouri, Indiana, Ohio, Texas, New Mexico and more!

In addition to disbursing this collection through Bennett's multiple large floor-auctions, many hundreds of nice flint relics will be sold via our "Mid-Week" internet auctions that are held through Proxibid Online Auctions. For more information on these Thursday Night Mid-Week sales, visit our website at www.oldrelics.com or call our office at 419-945-2893.

Terms of Sale:

This auction will be run in compliance with the selling guidelines as set forth by the AACA Inc. All items come with a 30 day guarantee. No buyers remorse returns please. Auctioneer has final say on determining which bidder is the high bidder. Auctioneer has final say on resolving any bidding disputes, and any decision to re-open bidding is at his sole discretion. Bennett's reserves the right to refuse admittance and/or participation in this auction to any individual or group.

Payments for all purchases are to be concluded by the end of the auction day. Buyers utilizing the Live Auction internet bidding and all absentee bidders must have auction account balances settled within 7 days of the auction close date. No items are to be removed from the auction room until the account balance for such items has been settled. Bennett's assumes no responsibility for theft, breakage, or any other cause of damage or devaluation for any item sold once the bidder has taken possession of the item. There is a 10% buyers premium on all items offered in this sale. For buyers utilizing the Proxibid Online Bidding feature, an additional 3% final value fee is charged by Proxibid and will be applied to all items purchased through the Proxibid Online feature in addition to the 10% buyers premium.

Ohio State Sales Tax of 6.75% will be applied to all sales unless a tax exemption certificate has been completed and signed prior to the close of auction. Out of state sales tax numbers will be accepted. Ohio State sales tax will not apply to any items which are shipped out of state.

Shipping:

Our goal is to provide our customers with authentic artifact auctions and reasonable shipping fees. Our standard method of shipping is via USPS Priority Mail with Delivery Confirmation. USPS Insurance is available upon request at the standard USPS rate. Shipping is based on a flat-rate fee of \$8.95 per box. All pottery items are shipped one-per-box to avoid breakage. We will combine as many multiple lots of smaller items as is safely possible in each box in order to minimize shipping fees. All larger, heavier, and bulky items will be billed at the actual rate charged by USPS. UPS delivery is available upon request. Any item that is lost in shipment or improperly delivered due to Post Office or UPS error will be the responsibility of the Post Office or UPS. Items marked "TW" cannot be shipped.

Absentee Bids:

To place an absentee bid, please call 419-945-2893 for more information. Absentee bids can also be emailed to jim@oldrelics.com, mailed or faxed to 419-945-2903. ALL absentee bids will be made on your behalf by an experienced bidder. There is an absentee bid form located in the rear of this catalog. Absentee bids must arrive at our office no later than two days prior to the auction date to be certain they will be included. Phone bids will also be accepted on certain lots. Please call prior to sale day at 419-945-2893 to make arrangements for phone bidding.

We accept: Visa - Mastercard - Discover - PayPal

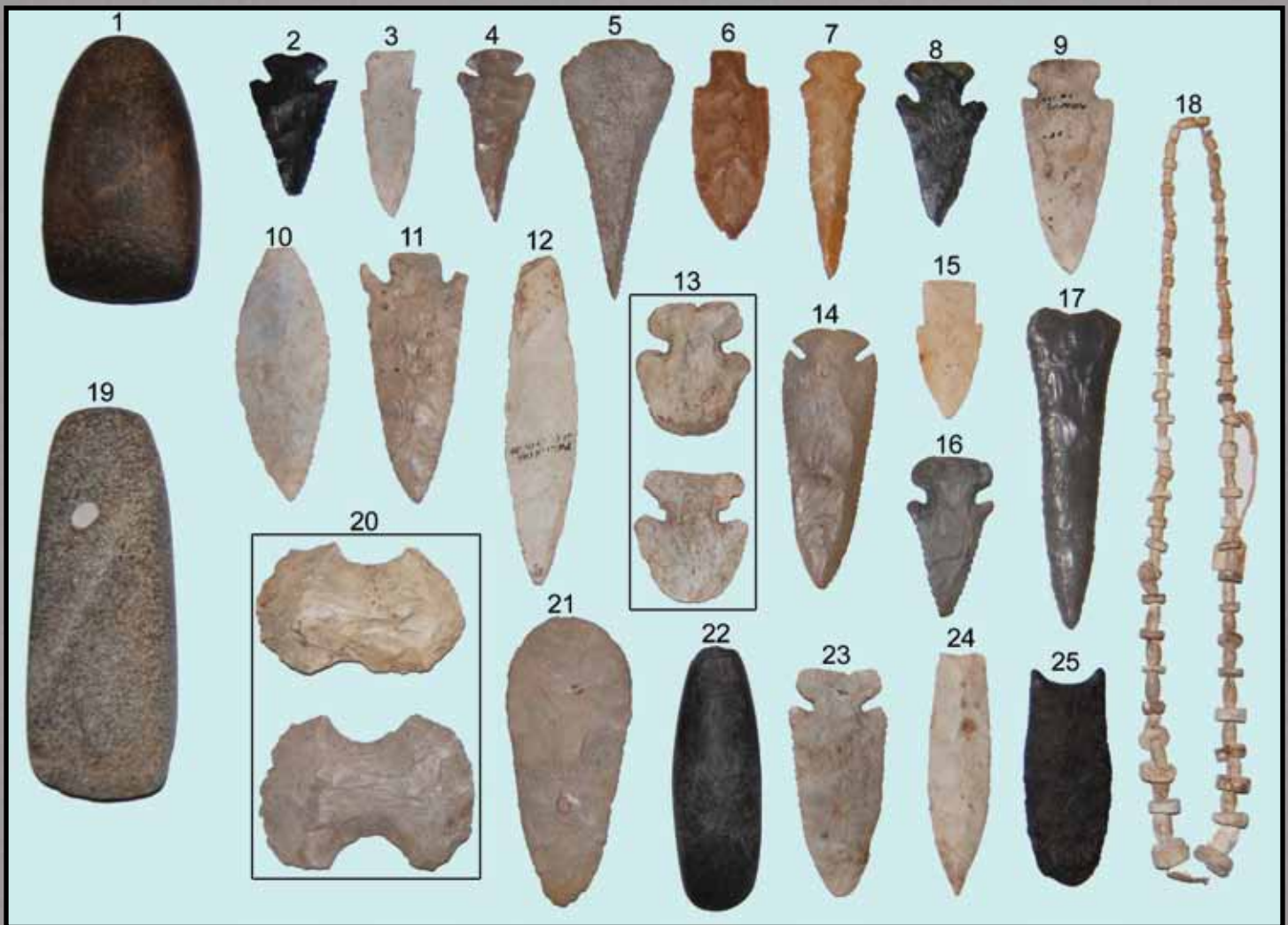
A 3% card processing charge (by credit card company) will be applied.





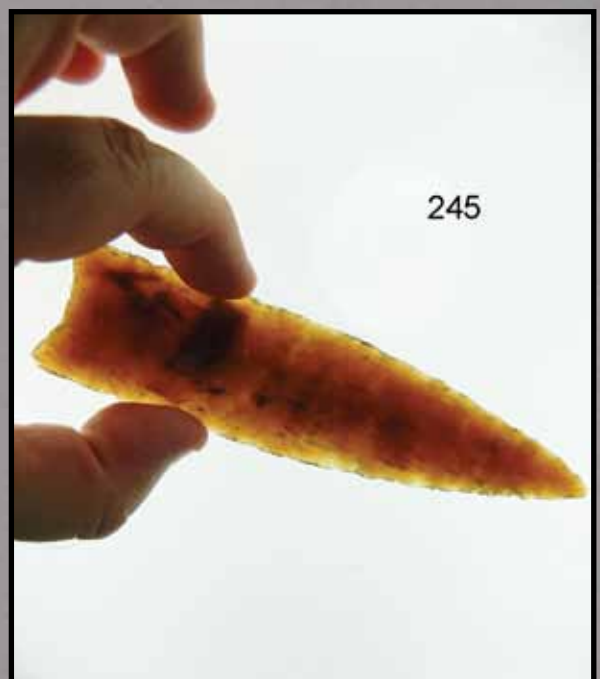
Larger individual photos
of each lot are available
on our website!

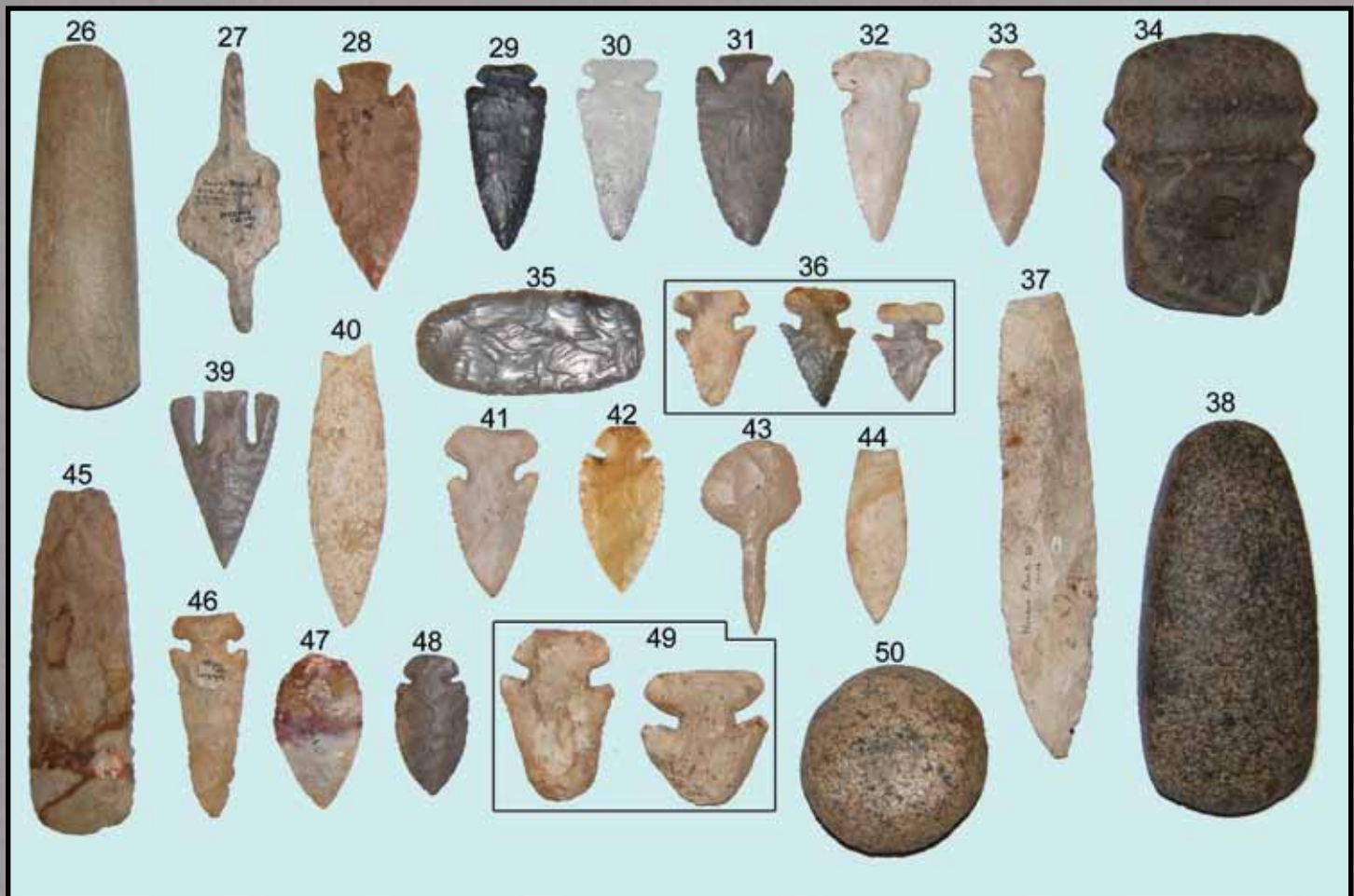
Visit
www.OldRelics.com



- 1) ___ 4 15/16" Ohio Hardstone Celt. Good use polish.
- 2) ___ Steeplly Beveled Archaic point - Ohio -Coshocton
- 3) ___ 3" Hardin found in Illinois.
- 4) ___ 3 3/16" Heavily Beveled Dovetail - KY
- 5) ___ 4 3/4" Harrodsburg Cobbs knife -Indiana.
- 6) ___ 3 7/16" Pontchartrain.
- 7) ___ 4 3/16" Neosho Knife -burinated fractured tip. Found in Missouri.
- 8) ___ Nice 3 1/6" Ohio Thebes point - Coshocton.
- 9) ___ 4" Ferry Point Found in Adams Co., Illinois.
- 10) ___ 4 1/2" Sedalia Found in Missouri
- 11) ___ 4 1/2" Haskell point - MO. Reed Springs Chert.
- 12) ___ 5 13/16" Sedalia - St. Clair Co., IL. ex Patrick
- 13) ___ Pair of Thebes Hafted Scrapers - Illinois.
- 14) ___ 4 5/8" Notch Base Dovetail - IN. One shoulder restored. Well made and displays nicely.
- 15) ___ 2 1/2" Hardin - Illinois - Burlington.
- 16) ___ Steeplly Beveled Archaic point - KY
- 17) ___ 5 3/4" Cobbs - KY Made from glossy Hornstone.
- 18) ___ Nice Beaded necklace found at Spiro Mound
- 19) ___ 6 1/2" Square Sided Celt found in Illinois.
- 20) ___ Pair of Double Bit "Bow Tie" Flint Axes - AR
- 21) ___ 5 1/16" - Flint Hoe, made of tan & gray chert.
- 22) ___ 4 5/8" Hardstone Celt -OH. Good overall polish with a sharp bit.

- 23) ___ 4 1/16" Thebes - Jefferson Co., Missouri. Made from Burlington.
- 24) ___ Well made 4 1/4" Illinois Sedalia made from Burlington.
- 25) ___ Large Paleo Simpson that measures just under 4". Found in Florida.





- 26) ___ Nice Hardstone Celt
- 27) ___ Very unique Bi-pointed Drill. 4 13/16". Found in Boone Co., MO. Writing in artifact says "Payne sale-Aug 15th 1935 n.e. Carter".
- 28) ___ Castroville - TX. Edwards Plat Chert
- 29) ___ 3 1/4" Coshocton Dovetail - OH. Base bottom fractured like a Decatur.
- 30) ___ 3 1/8" Illinois Archaic point
- 31) ___ Early stage Lost Lake made of Hornstone
- 32) ___ 3 1/4" Illinois Thebes made from Burlington
- 33) ___ 3 7/16" Fine Dovetail - IL. Excellent example
- 34) ___ 4 3/4" Miami River Axe - IN. Banded Slate.
- 35) ___ Thin and very well made Paleo Square Knife
- 36) ___ Set of 3 Ohio Thebes Points
- 37) ___ Large Sedalia - Pike Co., IL . Burlington
- 38) ___ 6 3/4" Hardstone Hopewell Celt - OH
- 39) ___ 3" Texas Andice. Tip and one barb restored
- 40) ___ Large Illinois Sedalia
- 41) ___ 3" Ohio Thebes - Chalcedony.
- 42) ___ 2 11/16" Dovetail found in Kentucky.
- 43) ___ Well made Paddle Drill
- 44) ___ 3" Sedalia that is well flaked. Found in Missouri.
- 45) ___ Nice 5 7/8" Flint Adze -Franklin Co., Ohio
- 46) ___ 3 7/16" E-Notch Thebes - Licking Co., Ohio.
- 47) ___ 2 5/8" OH Leaf Blade - Colorful Flint Ridge flint.
- 48) ___ 2 3/8" Dovetail -KY and made from Hornstone.
- 49) ___ Pair of Thebes Hafted Scrapers found in Illinois.
- 50) ___ 3" Double Cupped Ohio Discoidal.

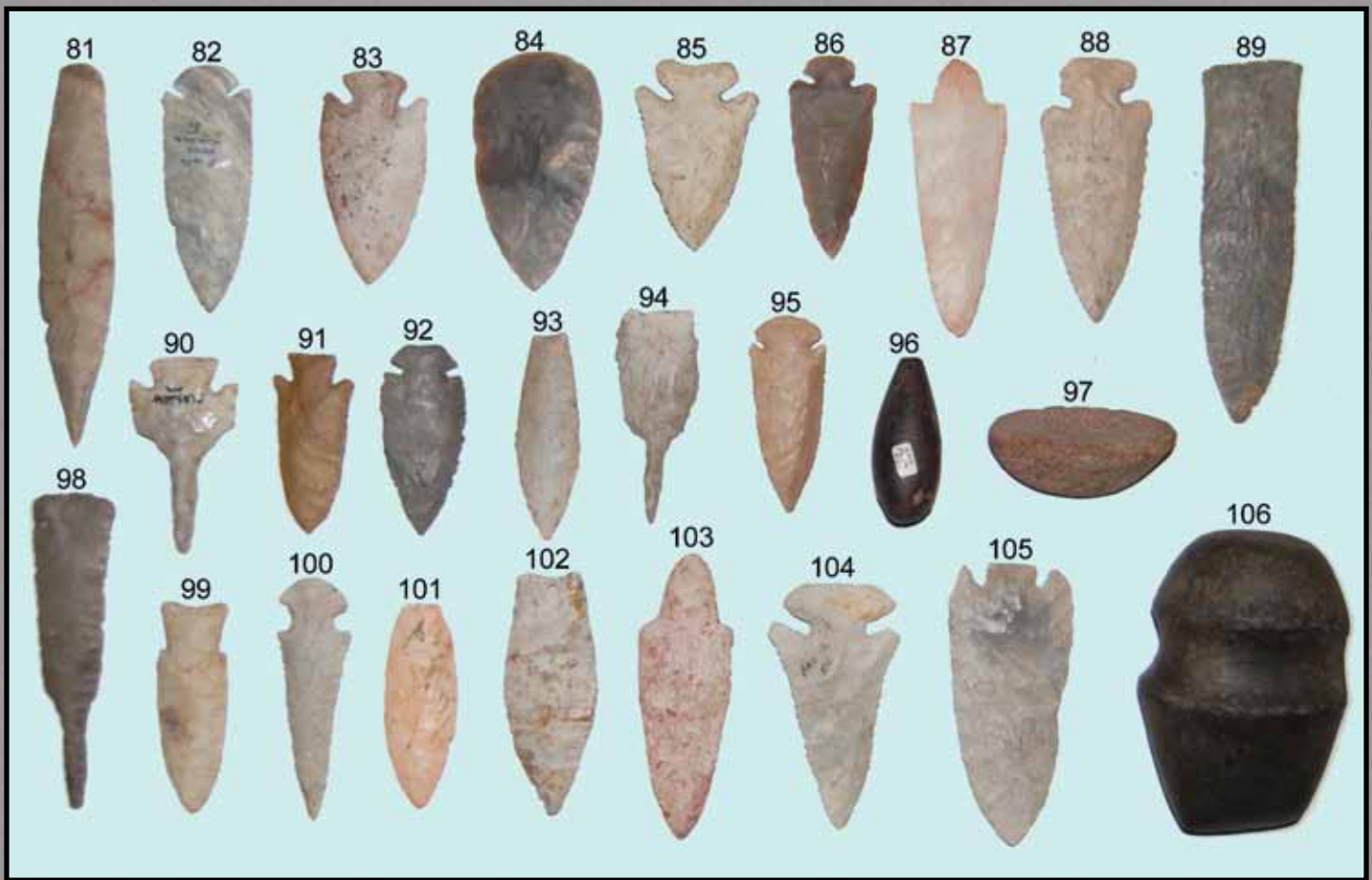


- 51) ___ Set of 3 MO points. 2 are made from Mozarkite. Largest is 3 3/8".
- 52) ___ Set of 5 Texas points. Largest is 3 1/8".
- 53) ___ Set of 7 Texas points
- 54) ___ Set of 7 assorted Arrowheads
- 55) ___ Set of 5 Coshocton points found in Ohio. All have some restoration.



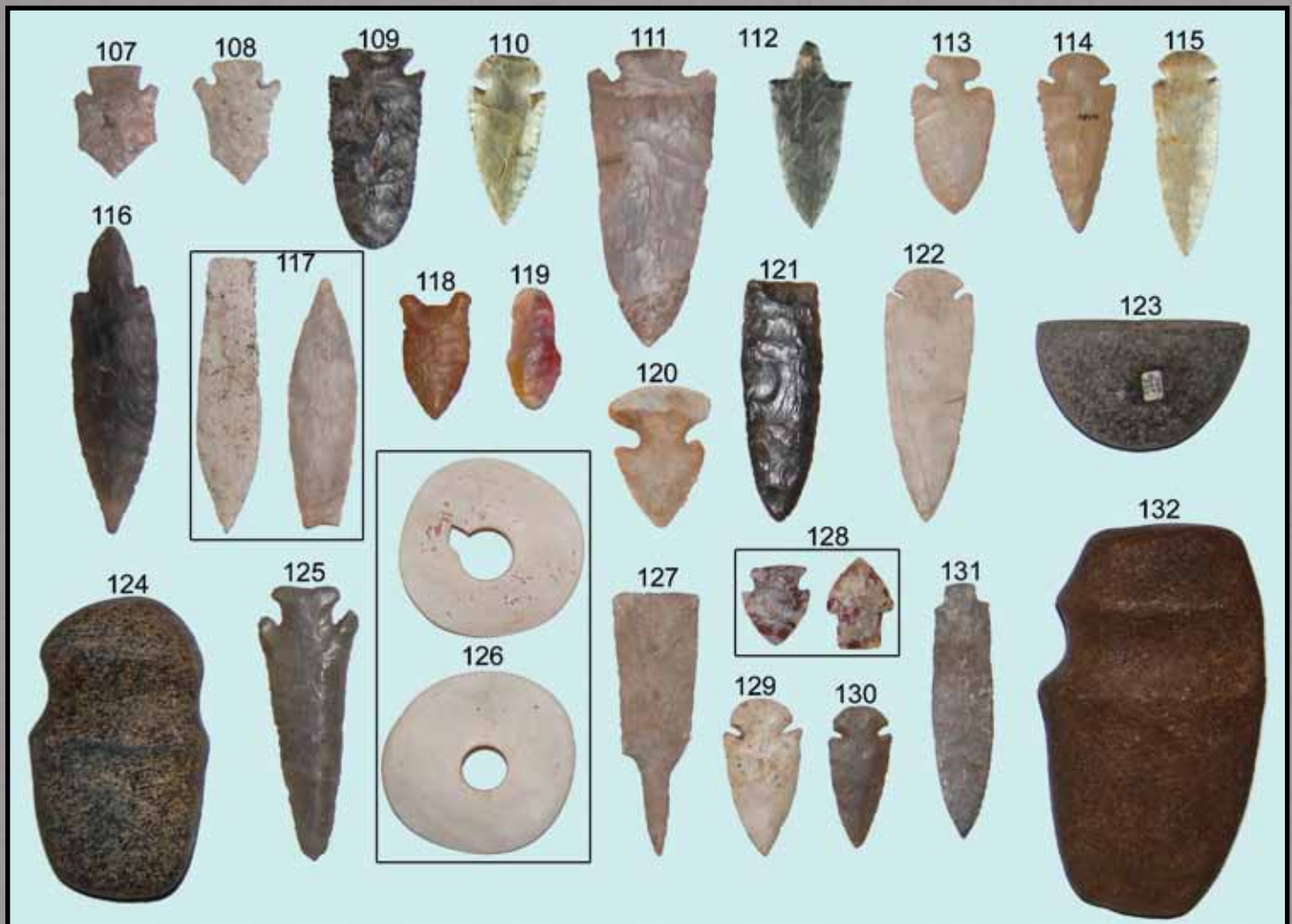
- 56)___ Set of 5 TX Ensor points.
 57)___ Sets of 6 TX points. One B&G
 58)___ Set of 3 Nice knives.
 59)___ Set of 7 assorted Arrowheads
 60)___ Set of 8 assorted Arrowheads
 61)___ Set of 5 Dalton points
 62)___ Pair of KY Cobbs Knives.
 63)___ Set of 6 assorted Arrowheads
 64)___ Set of 7 TX points. Largest is 2 5/8".
 65)___ Set of 3 assorted Arrowheads
 66)___ Set of 5 very nice Bone Artifacts
 67)___ Set of 6 Midwest Hafted Scrapers.
 68)___ Set of 5 Florida Bone Artifacts
 69)___ Set of 3 FL points. Largest is 3 7/8".
 70)___ Set of 3 Restored OH Points
 71)___ Pair of TX Knives. Largest is 3 7/8".
 72)___ Set of 5 Afton points- IL & MO. Largest is 2 9/16".
 73)___ Set of 6 TXpoints. Largest is 2 3/4".
 74)___ Set of 24 assorted Arrowheads
 75)___ Set of 5 points found in TX. Largest is 3 5/16".
 76)___ Set of 24 assorted Arrowheads
 77)___ Set of 7 assorted Arrowheads
 78)___ Pair of Hardstone axes found in MO. Largest is 5 1/8".
 79)___ Set of 3 Celts - MO. Longest is 5".
 80)___ Pair of Bannerstone Preforms - MO

Visit:
www.OldRelics.com
for information on upcoming
auctions



- 81) ___ Very Large 6 1/4" Sedalia found in Illinois.
- 82) ___ 4" Dovetail found in Scott Co., Illinois on 5-11-81. Made from Mozarkite. Superb piece.
- 83) ___ 3 1/2" "Snyders Afinis" Hopewell point, found in Missouri. Made of heat treated Burlington.
- 84) ___ 3 7/8" Covington Blade found in Texas that is thin and made of Edwards Plateau Chert.
- 85) ___ 3 3/16" Illinois Thebes made from Burlington. Beveled and very well made.
- 86) ___ 3 5/16" Ohio Dovetail made from a heavily patinated Flint Ridge with hints of purple, red, and orange.
- 87) ___ 4 9/16" Illinois Waubesa form of Dickson broad blade.
- 88) ___ Nice 4 5/16" Thebes found in Peoria Co., Illinois.
- 89) ___ Gahagan knife That measures just under 6".
- 90) ___ 3 3/16" Haskell Drill found in Glasgow, MO. Made of Jeff City chert.
- 91) ___ 2 7/8" Hardin found in the Midwest
- 92) ___ 3 1/8" Indiana Dovetail made from Hornstone.
- 93) ___ 3 3/8" Agate Basin found in Missouri.
- 94) ___ 3 7/16" Drill found in Texas.
- 95) ___ 3 3/16" Beveled Dovetail found in Indiana. Made from a tan chert.
- 96) ___ 2 3/4" ungrooved Hematite Plummet.
- 97) ___ 3 1/16" Boatstone found in Missouri.
- 98) ___ 5 1/8" Drill found in Texas.
- 99) ___ 3 7/16" Hardin found in Illinois. Great patina.
- 100) ___ 3 15/16" Kay Blade found in Missouri
- 101) ___ 3 5/16" Agate Basin found in Missouri.
- 102) ___ 4" Sedalia Found in Missouri.
- 103) ___ 4 5/8" Waubesa found in Missouri. Made of colorful heat treated Burlington chert.
- 104) ___ 4 1/16" Thebes found in Pike Co., Illinois and made from Burlington. Well made.
- 105) ___ 4 5/8" Base Tang knife Found in Missouri.
- 106) ___ 4 3/4" 3/4 groove Axe found in Indiana.

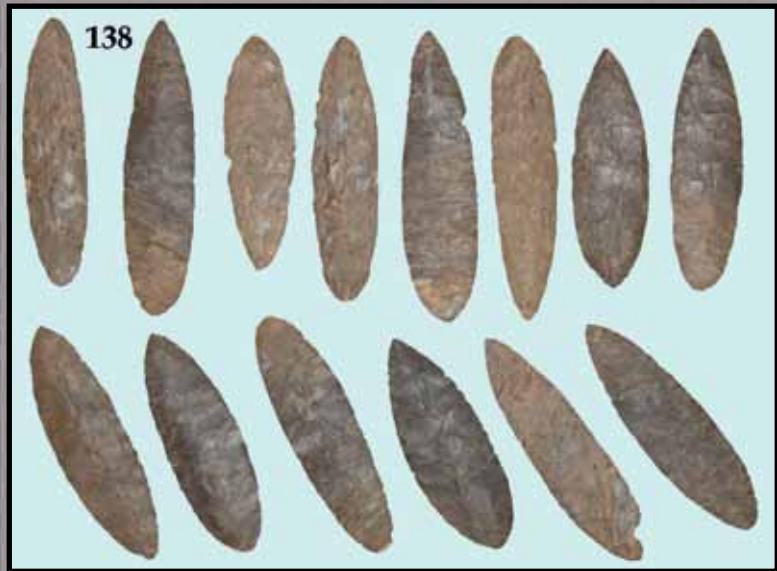
To place absentee bids directly through Bennett's - Call Us! 419-945-2893
To place absentee bids online through Proxibid go to - www.oldrelics.com

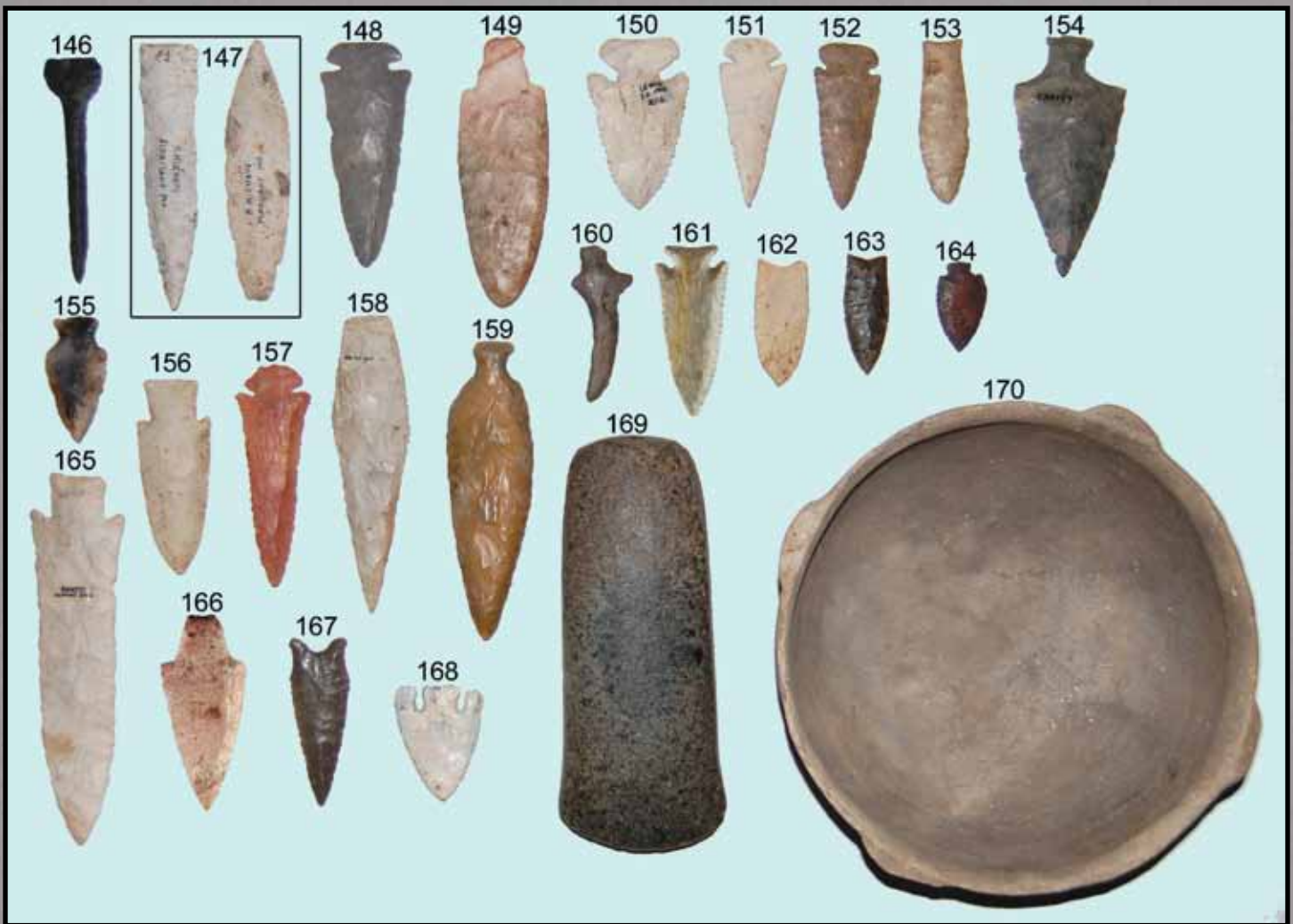


- 107)___ 1 15/16" Missouri Afton made from a glossy heat treated Reed Springs chert. Paper thin and fine!
- 108)___ 2 1/8" Missouri Afton made from a nice cream and gray flint.
- 109)___ 3 7/16" Coshocton Kirk Corner Notch found in Ohio.
- 110)___ 2 15/16" Kentucky Dovetail made from a heavily patinated Hornstone.
- 111)___ Very Large 5" Corner Notch knife
- 112)___ Well made Table Rock pointed stem found in Arizona and made from Pitkin.
- 113)___ 2 11/16" Thebes point found in Ohio. Made from a heavily patinated Flint Ridge.
- 114)___ nice 3 1/8" Dovetail found in Knox Co., Illinois.
- 115)___ 3 5/8" Dovetail found in Indiana.
- 116)___ 5 3/16" Hornstone Turkeytail found in Spencer Co., Indiana. Very thin.
- 117)___ Pair of Missouri Sedalia points, largest measuring 4 5/8"
- 118)___ 2 3/16" Jasper Paleo Quad point.
- 119)___ Simply Beautiful red yellow and clear agate most likely from Colorado. 2 1/8"
- 120)___ 2 7/16" Ohio Thebes made from Flint Ridge. Anciently worked down from a larger point.
- 121)___ 4 1/8" Frederick point found in Arkansas
- 122)___ 4 5/16" Dovetail found in Missouri. Thin and well made.
- 123)___ 3 1/2" wide by 2 1/4" Keeled Hardstone Boat stone found in Indiana.
- 124)___ 5 1/8" Axe found in Ohio and made from Hard stone.
- 125)___ Nice 4 11/16" Kentucky Lost Lake made from heavily patinated Hornstone.
- 126)___ Pair of 3 3/8" Diameter drilled Shell ornaments. Found in Spiro Mound, Arkansas.
- 127)___ 4 1/2" Drill found in Texas
- 128)___ Pair of beautifully colored Alibates points - TX. Both are around 1 1/2" long.
- 129)___ 2 11/16" Dovetail found in Illinois and made from Burlington.
- 130)___ 2 1/2" Dovetail found in Lula, Kentucky and made from Hornstone. Nice flaking.
- 131)___ 4 3/8" Mulberry Creek knife.
- 132)___ 6 7/8" 3/4 groove Axe found in Missouri.

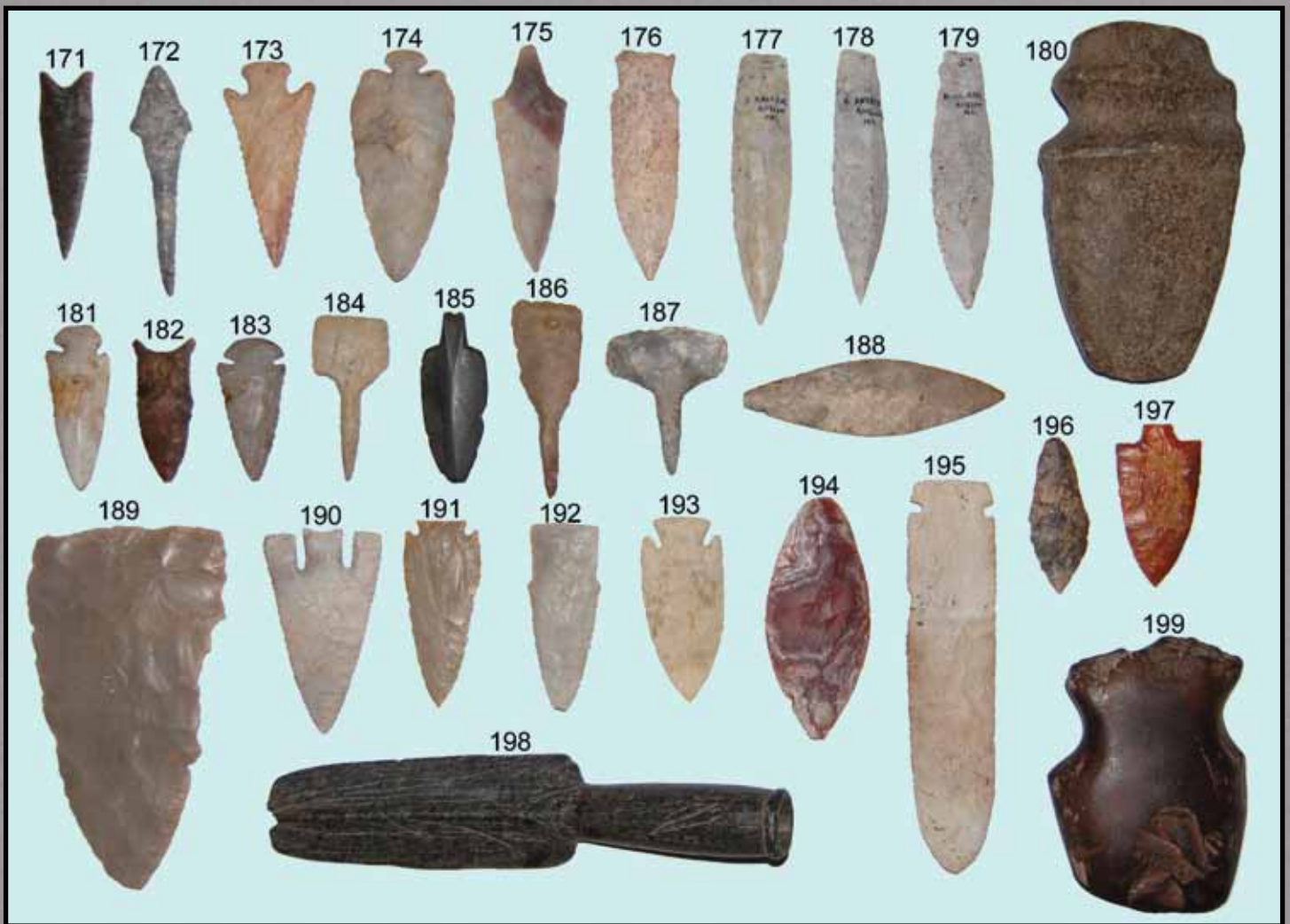


- 133) 8" full groove weight
- 134) Highly polished Pre-Columbian Celt
- 135) 7 1/2" Full groove Quartz axe
- 136) 9" long 3/4 groove axe found in MO.
- 137) Truly massive 10 5/8" by 5 3/4" 7/8 groove Camp Axe found in Lincoln Co., MO in 1925
- 138) Very nice cache of 15 Dover flint Blades. Longest is 5 13/16". Found in Tennessee.
- 139) Exceptional large Pre-Columbian stone human effigy statue
- 140) Large and very nice 6 1/2" tall by 5 1/4" wide Pre-Columbian axe.
- 141) 6 1/8" Pre-Columbian stone axe god
- 142) 5 1/4" tall Pre-Columbian stone human effigy statue
- 143) 2 7/8" wide noddled Pre-Columbian macehead
- 144) Group of 20 Pre-Columbian spindle whirls
- 145) HUGE! 16" Zoomorphic stone mortar in excellent condition





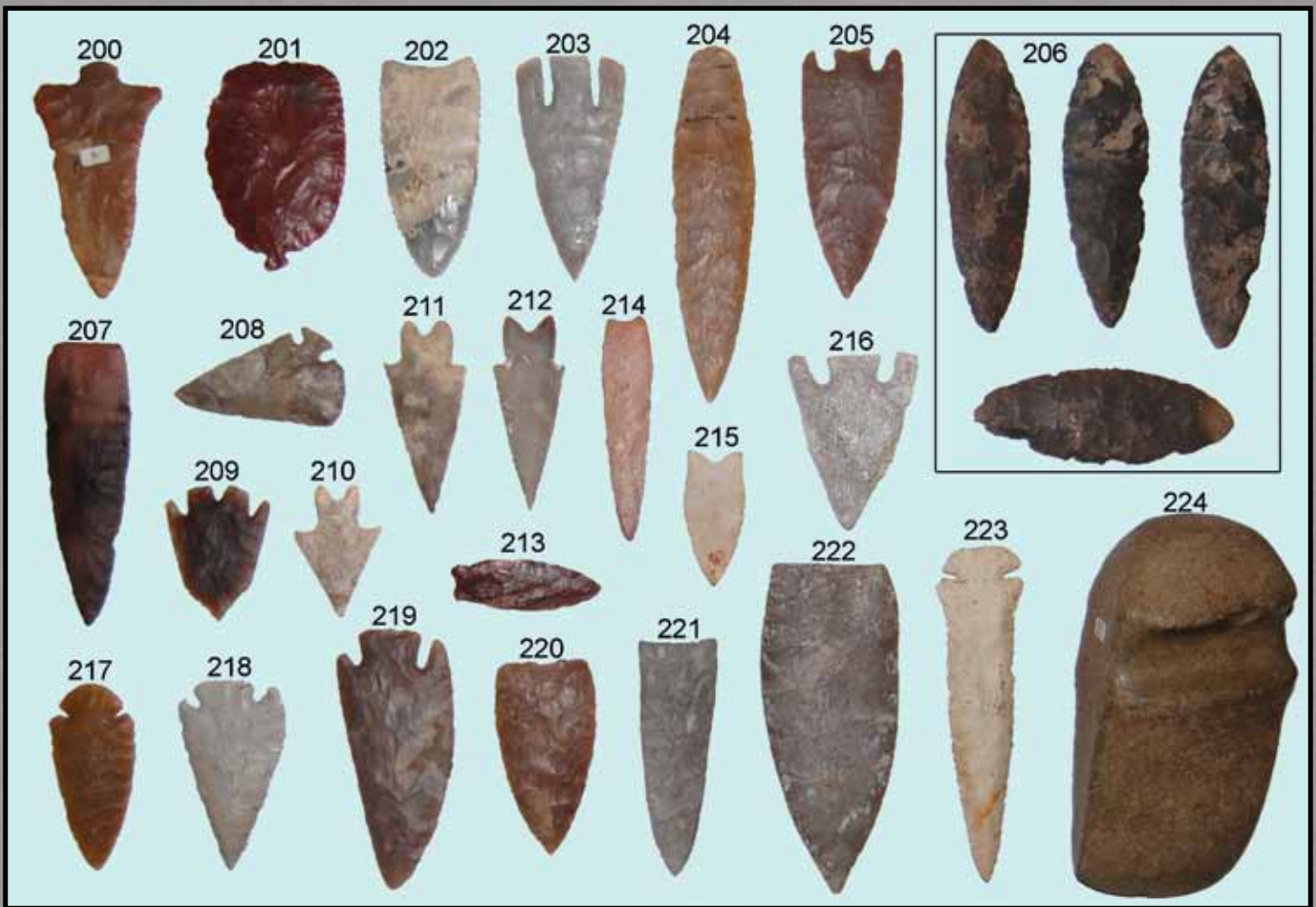
- 146)___ 4 3/8" Oklahoma Exceptionally well made with great flaking.
- 147)___ Pair of Sedalia points, largest measuring 5 3/16". Found Florissant, MO by F. Niehaus.
- 148)___ Large, 4 3/8" Wide-Base style Dovetail found in Anna, Illinois. Great flaking!
- 149)___ Beautifully colored flint on this 5 1/4" Neosho Knife found in Oklahoma made from heat treated Kay Co. Flint.
- 150)___ 3 3/8" Thebes point found in Lewis Co., Missouri and made from Burlington.
- 151)___ 3 5/16" Dovetail found in Illinois and made from Burlington. Heavily Beveled.
- 152)___ 3 1/4" KYDovetail made from brown chert.
- 153)___ 3 1/4" Pike County. Very heavily patinated and heavily ground lower edges.
- 154)___ 4 3/4" Fine Ashtabula found in Richland Co., Ohio. Made from Coshocton flint.
- 155)___ Beautiful 2 1/2" Hanna (Northern Variety), made of Montana agate.
- 156)___ 3 3/4" Hardin found in Illinois. Outstanding flaking. Made from Burlington.
- 157)___ 4 5/16" Beveled Dovetail found in Illinois. Made from an attractive pink flint.
- 158)___ 5 3/4" Missouri Angostura Found in Howard Co., Missouri.
- 159)___ 5 3/4" Ohio Ashtabula made from heavily patinated Coshocton
- 160)___ Exceptional Tennessee Shaft Scraper
- 161)___ 3 1/8" Lost Lake found in Kentucky. Made from Hornstone.
- 162)___ 2 1/2" Clovis fluted on 2 sides. Found in AR
- 163)___ 2 3/8" Goshen point That is very well flaked.
- 164)___ 1 3/4" Arkansas point made from Hematite. Rare material for an arrowhead.
- 165)___ Huge 7 3/16" Etely found in Pike /co., Illinois and made from Burlington.
- 166)___ 3 7/16" Dickson found in Worthington Indiana and made from Harrodsburg Chert.
- 167)___ 3 3/8" Oklahoma Dalton. Exceptionally well made.
- 168)___ 2 1/4" Calf Creek point found in OK Made from cream and blue Keokuk chert.
- 169)___ 7 3/4" Well made Flared-bit Celt found in Illinois. Outstanding relic.
- 170)___ 9 1/4" wide Mississippian bowl found in MO



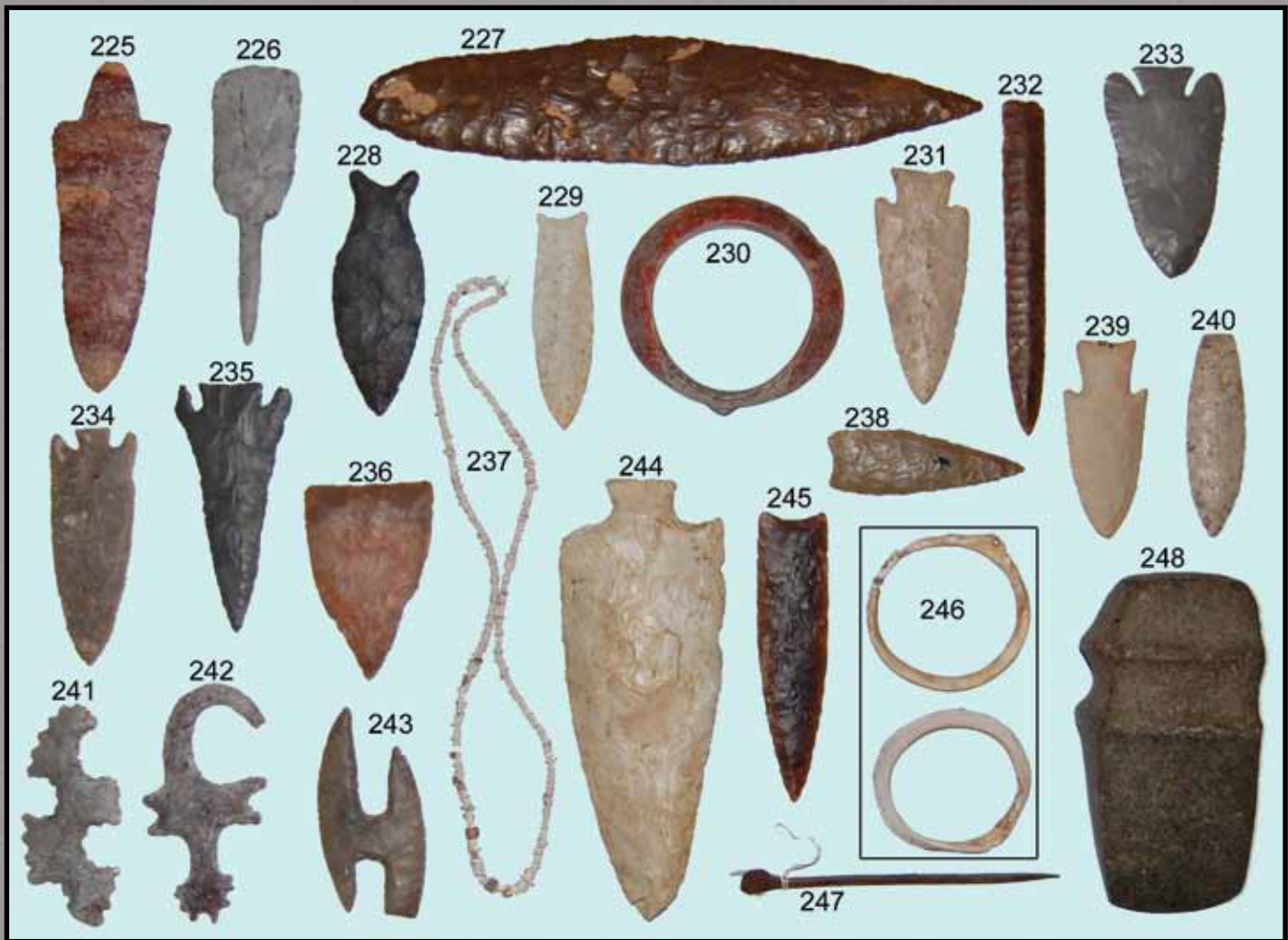
- 171)___ 3 5/8" Oklahoma Dalton. Small amount of restoration on the tip. Displays well.
- 172)___ 4 3/8" Gary Drill found in Oklahoma.
- 173)___ Nicely Beveled Hardin. Found in Missouri.
- 174)___ 4 7/16" Button-Base style Dovetail found in Licking Co., Ohio. Made from Flint Ridge flint.
- 175)___ 4 5/16" Gary found in Arkansas and made from Novaculite.
- 176)___ 4 3/8" Rice Side Notch found in Missouri.
- 177)___ 5 1/8" Missouri Nebo Hill
- 178)___ 4 13/16 Missouri Sedalia made from Burlington.
- 179)___ 4 15/16" Missouri Sedalia
- 180)___ Very Rare style! 6 1/2" 3/4 groove Axe with Raised Ridges and a very nicely fluted top.
- 181)___ 3 1/8" Indiana Dovetail with a sharp bevel.
- 182)___ 2 3/4" Beaver Lake found in Florida.
- 183)___ 2 11/16" Hornstone Dovetail found in Indiana with nice beveling.
- 184)___ 3 1/8" Paddle Drill found in Texas

- 185)___ Exceptionally rare 3 1/4" Slate Spear point found in New England.
- 186)___ 3 3/4" Drill found in Texas.
- 187)___ 2 13/16" Texas Drill.
- 188)___ 5" Bi-pointed Knife
- 189)___ Very Large 6 7/8" Friday knife found in Texas.
- 190)___ 3 13/16" Texas Andice. Tip and one barb restored.
- 191)___ 3 1/2" archaic corner notched point.
- 192)___ 3 9/16" Scottsbluff found in Missouri.
- 193)___ Well made 3 1/2" Illinois Hardin made from Burlington. Very symmetrical and well made.
- 194)___ Exceptionally beautiful 4 5/8" Ovate Knife found in Colorado.
- 195)___ 7 1/2" Illinois Godar. Made from Burlington. Huge relic!
- 196)___ 3" Lake Mohave With a heavily ground stem area.
- 197)___ 3 1/8" Florida Newnan with a snapped base. Awesome color!
- 198)___ Very Rare 9 3/4" Pipe found in Benton Co., Tennessee in 1952. Broken and glued at bottom of bowl.
- 199)___ 5 1/8" Grooved Hematite Axe.

**Absentee and phone bids
accepted on all lots!
Call: (419) 945-2893**

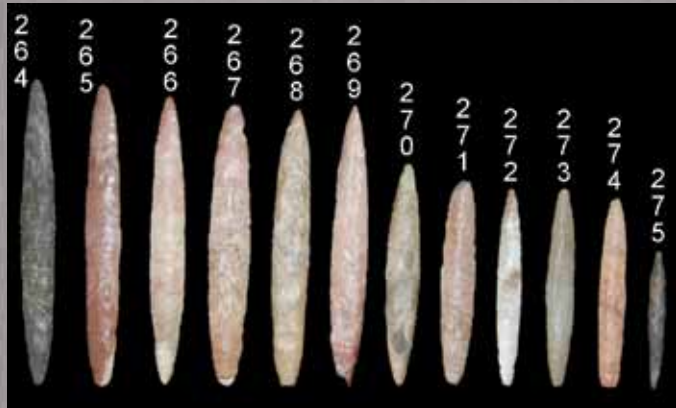
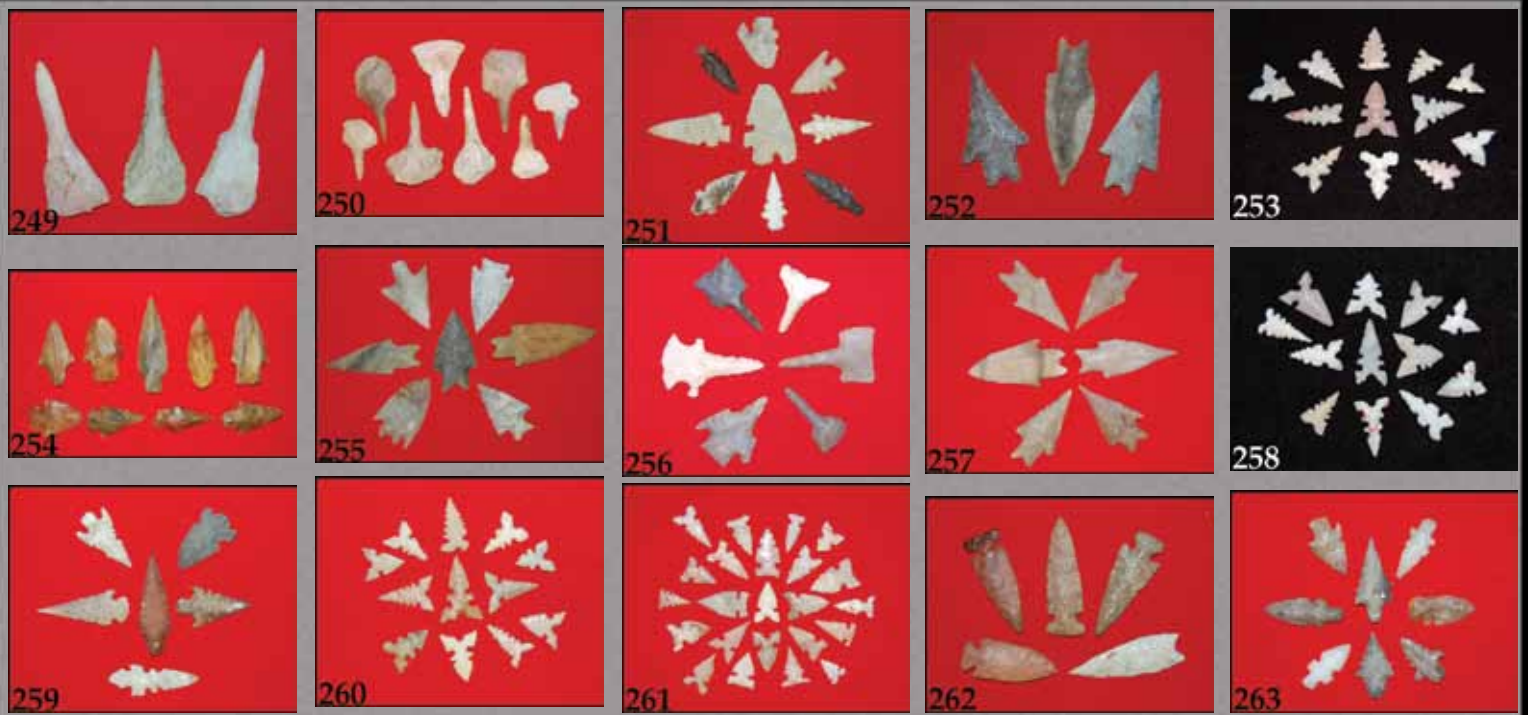


- 200)___ 4 5/16" Marion Found in Florida
- 201)___ One of the best of this type I've ever seen! 3 13/16" Paleo Early Ovoid Knife Knife made from beautiful red Jasper. From the High Plains.
- 202)___ 4" Blade found in Missouri. Finely serrated.
- 203)___ 4" Texas Andice. Tip and one barb restored. Made of Edwards Plateau chert.
- 204)___ Exceptionally thin and well made 6 3/8" Nebo Hill Found in Blackwell Missouri.
- 205)___ 4 9/16" Texas Marshall made from Edwards Plateau. Superb relic!
- 206)___ Set of 4 Cache Blades found on the Kirl Farm in the town of Algoma, Winnebago Co., WI. Largest is 5 1/2".
- 207)___ 5 1/16" Caddoan knife, made of novaculite. From Arkansas.
- 208)___ Well made 3 1/8" Corner Tang Knife found in Texas and made from Edwards Plateau.
- 209)___ 2 7/16" Translucent Texas Montell.
- 210)___ 2 3/8" Texas Pedernales point. Thin and well patinated.
- 211)___ 3 7/16" Pedernales point found in Texas and made from Edwards Plateau.
- 212)___ 3 7/16" Pedernales point found in Texas and made from Edwards Plateau.
- 213)___ Very nice Rio Grand type made from Alibates. Found in TX/NM
- 214)___ 4" Karnak Found in Missouri.
- 215)___ 2 1/2" Dalton found in Illinois. Well made.
- 216)___ 3 1/4" Oklahoma Smith point made from Quartz.
- 217)___ 3 5/16" Wisconsin Dovetail made from Hixton Quartzite. Fine relic.
- 218)___ 3 7/16" Afton point, resharpened more on one side.
- 219)___ 4 5/8" Texas Castroville point made from Edwards Plateau
- 220)___ 3 1/2" Texas Kinney knife made from Edwards Plateau.
- 221)___ 4 3/4" Texas Darl blade. Super thin.
- 222)___ 5 15/16" Texas Friday Knife. Paper thin and finely made.
- 223)___ 6" Illinois Dovetail with a small amount of professional restoration to the tip.
- 224)___ Very rare style! 6 7/8" Half Groove Axe in excellent condition.



- 225)___ 5 13/16" Dickson found in Cooper Co., Missouri in 1990. Ex Pace. Great color.
- 226)___ 4 15/16" Texas Drill made from a heavily patinated white flint. Awesome relic.
- 227)___ Simply Huge! 11" bi-pointed knife
- 228)___ 4 3/8" Simpson found in Florida. One ear has been professionally restored. Displays well.
- 229)___ Nice Illinois Pike County
- 230)___ Very rare artifact! 3 15/16" Shell Bracelet with original paint.
- 231)___ 4 3/16" Hardin found in Illinois and made from Burlington.
- 232)___ 5 15/16" Eden found in Nebraska and made from brown Jasper. Aprox. 1 1/2" to 2" professional restoration on tip. Displays well.
- 233)___ Well made 3 7/8" Kentucky Lost Lake made from Hornstone.
- 234)___ 4 1/8" Texas Marshall point. Very thin and made from a semi-translucent flint.
- 235)___ Large 4 3/8" Oklahoma Haskell. Thin with great flaking.
- 236)___ Beautifully colored material on this 3 1/2" Tri angular knife
- 237)___ Beaded Shell Necklace found at Spiro Mound
- 238)___ 3 1/2" Angostura Found in Texas
- 239)___ 3 1/2" Illinois Hardin made from Burlington. Very nice flaking.
- 240)___ 2 5/8" Agate Basin that is very nicely flaking with heavy mineral deposit. Found in Missouri.
- 241)___ 3 7/8" Mayan Flint Eccentric
- 242)___ 4 3/16" Mayan Flint Eccentric
- 243)___ 3 7/8" Mayan Flint Eccentric
- 244)___ Huge 7 5/8" Hopewell knife found in Missouri.
- 245)___ Simply superb 5 1/16" Paleo Blade made from Knife River flint and found in Ward Co., North Dakota.
- 246)___ Pair of Shell Bracelets
- 247)___ Nice Copper Hair Pin
- 248)___ Well made 5 3/4" long 3/4 groove axe

Visit:
www.OldRelics.com

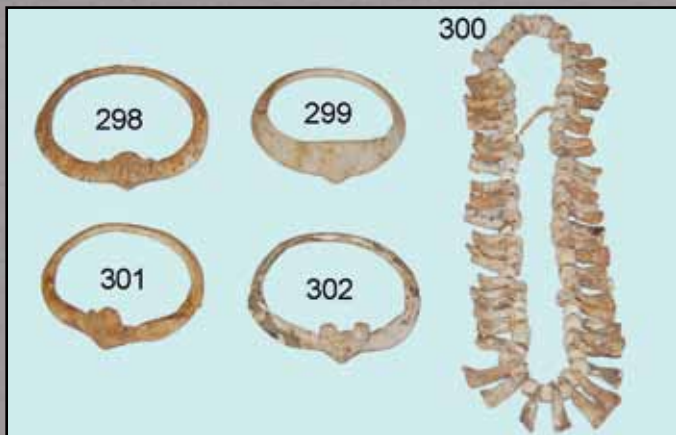


- 249)___ Set of 3 drills - MO. One is broken & glued. Longest is 3 5/8".
- 250)___ Set of 7 assorted SW arrowheads
- 251)___ Set of 8 nice Alws and perforators
- 252)___ Set of 3 Texas Pedernales points. Largest is 3 1/4".
- 253)___ Set of 12 Texas Toyah points. Longest is 13/16"
- 254)___ Set of 3 Texas area arrowheads.
- 255)___ Set of 7 Texas points. Largest is 3 3/8".
- 256)___ Set of 6 TX Drills and Perforators. Largest is 2 1/8".
- 257)___ Set of 6 TX Pedernales. Largest is 2 15/16".
- 258)___ Set of 12 Texas Toyah points. Largest is 15/16".
- 259)___ Set of 6 SW Arrowheads
- 260)___ Set of 12 Texas Toyah points. Largest is 1 1/16".
- 261)___ Set of 23 Birdpoints found in Texas. Largest is 1".
- 262)___ Set of 5 assorted Arrowheads
- 263)___ Set of 8 SW Arrowheads
- 264-275)___ Bi-Pointed Blade found in NE Oklahoma. Found as part of a cache. Includes a copy of a Perino COA. Sizes range from 7 7/8" to 3 9/16".
- 276)___ Beautiful E TN rattlesnake Gorget made from shell with nice incised image. 5" wide - Davis COA
- 277)___ 4 3/4" Shell Gorget found in Post Oak Island in Knox co., tn
- 278)___ Engraved Shell Gorget
- 279)___ Nice set of 6 bone Awls-longest is over 7"
- 280)___ 9" section of Conch shell that has been scribed and cut in ancient times. Found at Spiro Mound, OK
- 281)___ Incredible set of 2 3/4" diameter copper coated shell ear spools found at Spiro Mound, OK.
- 282)___ 2 Sets of drilled beads found at the Spiro Mound.

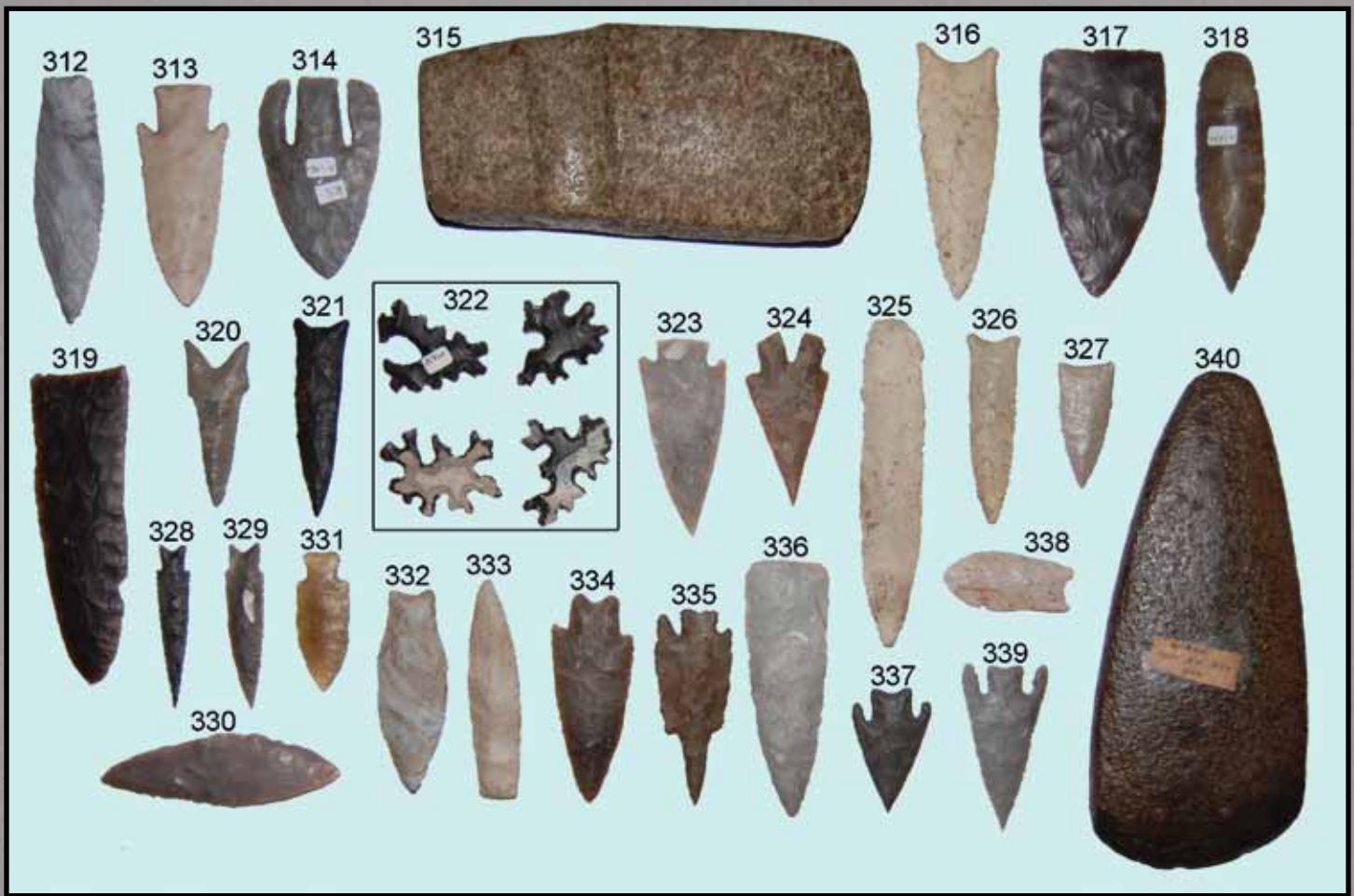
Visit:
www.OldRelics.com



* Pottery pictured on this page is not from the Fred Eiserman collection.

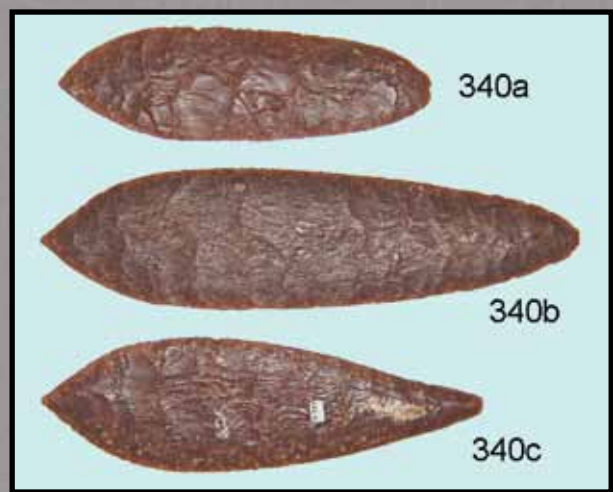


- 283) ___ 6 3/4" tall Caddo bottle Some rest. AR
- 284) ___ 6" wide painted bowl. Solid. SW US.
- 285) ___ 6 3/4" wide prehistoric bowl from the SW US.
- 286) ___ 5" wide Corrugated bowl. SW US.
- 287) ___ Corrugated painted bowl. SW US. 5" wide
- 288) ___ 10" tall Blakely water bottle - Clark Co., AR
pieced together with minimal res.
- 289) ___ 8 1/4" tall restored Seed Jar - Clark co., AR
- 290) ___ 8 1/2" AR Blakely water bottle. Solid
- 291) ___ 3 3/4" wide Plainware miniature Olla
- 292) ___ 6 1/2" AR Plainware water bottle. Glued
- 293) ___ 7" tall Caddo Punctate jar with only minor
repair found in Clark Co., Arkansas.
- 294) ___ 7 3/8" AR Incised Caddo jar. Some res.
- 295) ___ 6" tall Caddo jar that has been nicely glued
back together. Clark Co., Arkansas.
- 296) ___ Means bowl-8 3/4" wide - Clark Co., Arkansas.
- 297) ___ 5 1/4" wide - nicely incised Means bowl.
Found in Clark Co., Arkansas.
- 298) ___ 4" Pre-columbian Shell Bracelet w/effigy.
- 299) ___ 3 3/4" Pre-Columbian Shell Bracelet with nice
effigy design. Broken & glued.
- 300) ___ Exceptional necklace of drilled shell beads.
- 301) ___ 3 5/16" Pre-Columbian Shell Bracelet with nice
effigy design.
- 302) ___ 3 1/2" diameter Pre-Columbian Shell Bracelet
- 303) ___ 4" wide Pre-Columbian miniature bottle. Nicely
made polished brownware. W. Mexico.
- 304) ___ 6" wide Pre-Columbian shallow bowl.
- 305) ___ 4 1/2" Pre-Columbian Blackware noddled jar
- 306) ___ 2 1/8" Eccentric found in Missouri
- 307) ___ 2 3/8" Eccentric found in Texas.
- 308) ___ 1 7/8" Eccentric found in Illinois
- 309) ___ 2 3/16" Eccentric found in Missouri.
- 310) ___ Very neat 2 11/16" Eccentric found in Illinois.
- 311) ___ 2 13/16" Eccentric found in Missouri

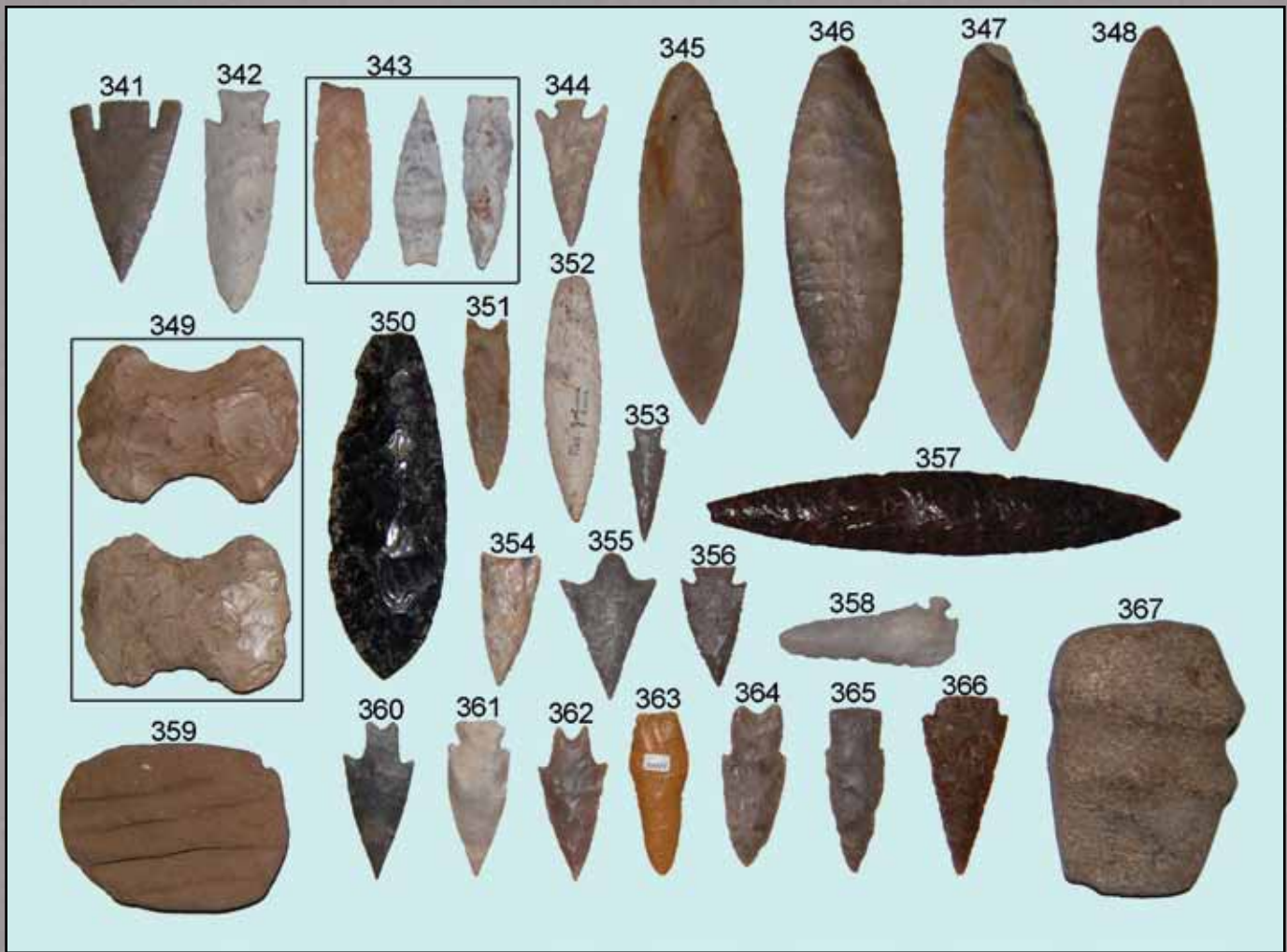


- 312)___ 4 1/4" Missouri Sedalia made from Mozarkite.
- 313)___ Nice 3 13/16" Illinois Hardin. Burlington.
- 314)___ 3 7/16" Texas Andice. Tip has been professionally restored and displays well.
- 315)___ Exceptionally rare 7 1/8" half grooved Axe.
- 316)___ Awesome 4 3/8" Dalton found in Illinois
- 317)___ Thin TX Friday Knife made from Edwards
- 318)___ 4 1/8" Lance-shaped point Found in Texas
- 319)___ Exceptional 5 7/16" TX Blade. Rootbeer flint.
- 320)___ Fine 2 7/8" Dalton Drill - McIntire Co., OK
- 321)___ Heavily patinated Florida Simpson
- 322)___ 4 Mayan Obsidian Eccentrics found in Belize.
- 323)___ 3 3/8" Texas Bell made from Edwards Plateau.
- 324)___ 3" Texas Montell made from Edwards Plateau. Thin with nice pressure retouch flaking.
- 325)___ 5 11/16" Knife Found in Missouri
- 326)___ 3 1/4" Dalton Found in Missouri.
- 327)___ 2 1/14" Scottsbluff found in Missouri.
- 328)___ 2 13/16" Fine Texas Arrowhead
- 329)___ 2 7/8" Fine Texas Arrowhead
- 330)___ 4 3/16" Harahey Knife found in Texas.
- 331)___ 2 3/8" Arrowhead - very translucent
- 332)___ 3 1/2" Sedalia found in Missouri
- 333)___ 3 13/16" Nebo Hill found in Missouri
- 334)___ 3 5/8" Texas Gower - Great relic.
- 335)___ 3 7/16" Texas Drill.
- 336)___ 4 1/2" Blade Found in Texas

- 337)___ 2 3/16" Oklahoma Andice
- 338)___ 2 1/4" Paleo Dart Found in Missouri.
- 339)___ 3" Calf Creek found in Oklahoma. Thin and well made.
- 340)___ Large 8 1/2" Celt found Pope Co., Arkansas



- 340a)___ Beautiful 8 5/8" Aztec Blade. MX
- 340b)___ Truly incredible 12 5/8" x 3 1/4" wide Aztec blade found in Mexico. Nicely patinated. A true museum grade artifact.
- 340c)___ Large 10 1/4" Atec Blade



- 341) ___ 3 5/8" Texas Castroville point. Well made and an outstanding example.
- 342) ___ 4 7/16" Hardin found in Illinois. Very well made.
- 343) ___ Set of 3 Sedalia points found in Missouri. Longest is 3 7/8".
- 344) ___ 2 7/8" Epps Found in Texas
- 345) ___ Nice 7" Mayan blade
- 346) ___ 7 5/8" Mayan blade that is thin and well made - broken & glued at midsection.
- 347) ___ Beautiful Mayan knife that is just under 8"
- 348) ___ Well made 8 3/8" Mayan Knife
- 349) ___ Very nice pair of 4 1/4" flint Bowtie Axes found in Missouri.
- 350) ___ Incredible 6 5/8" Obsidian Aztec knife.
- 351) ___ Beautiful 3 5/16" Plainview
- 352) ___ 4 3/4" Nebo Hill found in the Johnston farm in Illinois.
- 353) ___ 2 1/4" Uvalde Found in Texas
- 354) ___ Beautiful material on this 2 5/8" Tortugas With a nicely ground base and beveled edges.
- 355) ___ Arenosa found in Texas and made from Edwards Plateau
- 356) ___ Nicely serrated 2 5/16" Ellis Found in Texas
- 357) ___ 9 3/16" Colima Blade made from Mohogany Obsidian.
- 358) ___ 3 1/2" Oklahoma Uniface Corner Tang Knife.
- 359) ___ Very nice 4 3/8" Sandstone Abrader found in Missouri.
- 360) ___ 3 1/8" Texas Pedernales point. Thin with a fine needle tip.
- 361) ___ 3" Lange from TX
- 362) ___ 3" Texas Pedernales made from Edwards Plateau.
- 363) ___ 3 3/16" Jasper Shoshone knife.
- 364) ___ 3 1/8" Texas Gower made from Edwards Plateau.
- 365) ___ 3 3/16" Scottsbluff found in Texas.
- 366) ___ 3 1/2" Texas San Saba made from Edwards Plateau.
- 367) ___ 3/4 Groove Ohio Axe. Measures 5 1/4".

Visit: www.OldRelics.com

Larger individual photos of each lot are available on our website!



- 368)___ 3 1/4" Dalton Found in Missouri.
- 369)___ 3 7/16" Lerma With nice secondary flaking.
- 370)___ 2 7/8" Heavy Duty found in Indiana and made from Hornstone.
- 371)___ 3" Kentucky Big Sandy made from colorful Sonora flint.
- 372)___ Beautiful 3 3/16" Paleo Hell Gap Made from nice material with heavily ground lower edges.
- 373)___ 3 3/8" Notch Base Dovetail found in Kentucky and made from Hornstone. Beveled and well made.
- 374)___ 3 1/2" Nolan With a nicely Beveled Stem. Found in Texas.
- 375)___ Lerma Blade
- 376)___ 2 7/8" Texas Uvalde. Nice flaking.
- 377)___ 3 3/8" Kentucky Big Sandy Drill made from Hornstone.
- 378)___ 3 9/16" Dovetail found in Illinois.
- 379)___ 4 3/16" Etley "A" variety, from MO
- 380)___ 4 1/16" Etley found in Madison Co., Illinois on the Waters Farm. Made from Burlington.
- 381)___ 3 13/16" Lerma Blade
- 382)___ 3 1/4" Afton found in Missouri. Very thin and well made. Fine relic.
- 383)___ 2 7/8" Flint Ridge Bevel found in Ohio. Heavily patinated.
- 384)___ 2 7/8" Thebes found in Indiana and made from Hornstone. Nice broad style.
- 385)___ 2 3/8" Pelican Lake Made from beautiful Knife River
- 386)___ 2 5/8" McKean Found in Missouri.
- 387)___ Finely made 2 3/4" Texas Ensor point. Great serrations.
- 388)___ 2 7/8" Texas Pedernales made from highly translucent Root Beer flint.
- 389)___ 2 3/8" Dalton found in Missouri.
- 390)___ 2 3/4" Agate Basin that is very nicely flaked. Minor impact fracture to tip. Found in Illinois.
- 391)___ Nicely Beveled 2 1/2" Angostura
- 392)___ 2 3/16" Expanded base drill. Made from Alibates flint and found in Texas.

Visit:
www.OldRelics.com



- 393)___ 1 5/16" Point of Pines found in Arizona
- 394)___ 1 1/4" Kin Klesto
- 395)___ 1 1/8" Hodges found in Arizona.
- 396)___ 1 3/16" Pueblo Side Notch
- 397)___ 1" Columbia Plateau from Washington
- 398)___ 7/8" Desert Side Notch made from beautiful Jasper
- 399)___ 11/16" Toyah found in Texas
- 400)___ 1" Toyah found in Texas and made from Jasper
- 401)___ 3/4" Harrel made from Alibates
- 402)___ 13/16" Washita
- 403)___ 1 1/16" Wallula made from gem grade jasper.
- 404)___ 1 1/4" Acatita found in New Mexico
- 405)___ 1 5/16" Wallula from the Columbia River, Washington

- 406)___ 1 7/16" Dolores found in New Mexico
- 407)___ 1 9/16" Gunther
- 408)___ 1 9/16" Rose Springs Stemmed
- 409)___ 1 5/8" Rose Springs
- 410)___ 2" Columbia Plateau
- 411)___ 2 3/16" Rose Springs Corner Notch made of colorful red Jasper
- 412)___ Truly exceptional 10 1/4" long Inca Plate found in Peru. 1200-1550 AD
- 413)___ Beautiful 5" tall Ceramic Kero with a monkey effigy handle.
- 414)___ 4 3/4" tall nicely painted Ceramic Human face Kero found in Peru.
- 415)___ 4 1/8" Lama Canopa found in Peru.
- 416)___ 4 1/8" tall nicely decorated Stone Kero found in Peru. Broken and Glued- but very nicely done.
- 417)___ 3 5/8" Inca mace head found in Peru
- 418)___ 4 1/4" Incan Mace head found in Peru
- 419)___ 2 1/4" tall Ceramic human effigy.
- 420)___ 3 5/8" long Ceramic whistle found in Peru



Artifacts recovered at Spiro Mound





Absentee Bid Form

Name _____

Address _____

City _____ State _____ Zip _____

----- cut along dotted line - mail or fax -----

Lot Number	Maximum Bid	Lot Number	Maximum Bid

Please mail complete form to:
Bennett's
P.O. Box 315
Polk, OH 44866

**To insure bids are received in
time for auction - please return
Form A.S.A.P.!**

Forms can also be faxed to 419-945-2903

Please call with any questions
419-945-2893

Indian Artifact Auction

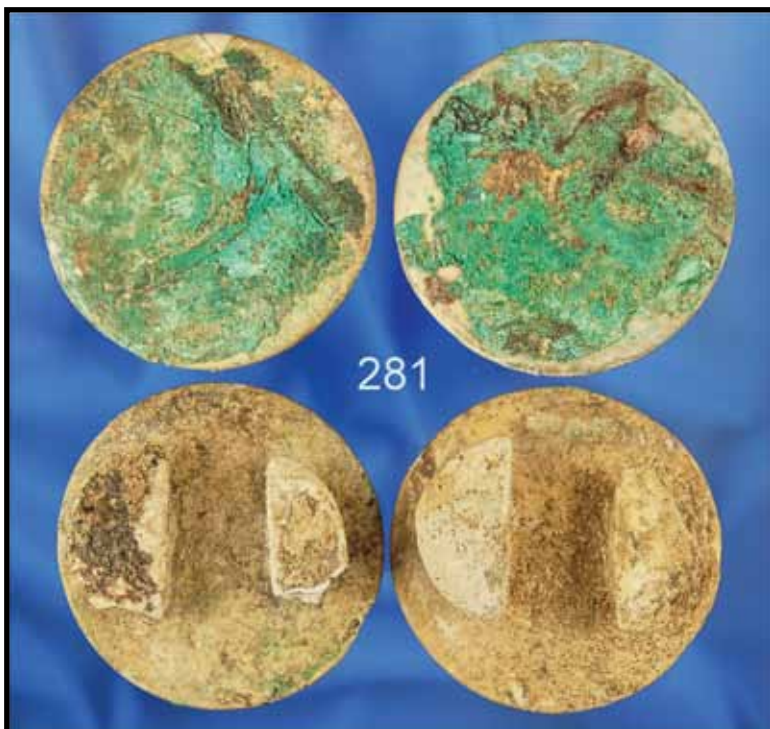
Mansfield, Ohio

Sunday, Aug. 21st., 2011

Online Bidding Available! Visit www.oldrelics.com for more info!



Featuring RARE artifacts
from the Spiro Mound!



Bennett's Artifacts
P.O. Box 315
Polk, OH 44866

PRSRT STD
PERMIT #1
POLK, OHIO
44866

Over 2,000 Photos Available Online!
Visit www.OldRelics.com!